



**For Research Use Only. Not for Diagnostic or Therapeutic Use.**

Purchase does not include or carry any right to resell or transfer this product either as a stand-alone product or as a component of another product. Any use of this product other than the permitted use without the express written authorization of Allele Biotech is strictly prohibited

Website: [www.allelebiotech.com](http://www.allelebiotech.com)  
Call: 1-800-991-RNAi/858-587-6645  
(Pacific Time: 9:00AM~5:00PM)  
Email: [oligo@allelebiotech.com](mailto:oligo@allelebiotech.com)

**Box 1 | Basic Info**

Cat. No.	ABP-MAB-BL002
Animal ID	N/A
Host	Mouse
Reactivity	Human, Mouse, Rat, Rabbit, Chicken
Format	Purified
Accession number	NM_007393.3
Amount	100 µg

Alternative Name(s): BA3R

**References:**

1. N/A

## Anti-β-Actin, Anti-β-Actin (BA3R) Loading Control Monoclonal Antibody

Anti-β-Actin (BA3R) Loading Control monoclonal antibody recognizes native and denatured forms of β-Actin (~42kDa). Cross reactivity to β-Actin from human, mouse, rat, rabbit, and chicken. β-Actin from other species may also be detectable.

### Buffers

This antibody is purified through Protein A affinity chromatography from mouse ascites fluid and is supplied in 1mg/mL in 10mM PBS, pH 7.2, with 0.05% NaN<sub>3</sub>

### Immunogen

β-Actin N-terminal peptide-KLH conjugates

### Application

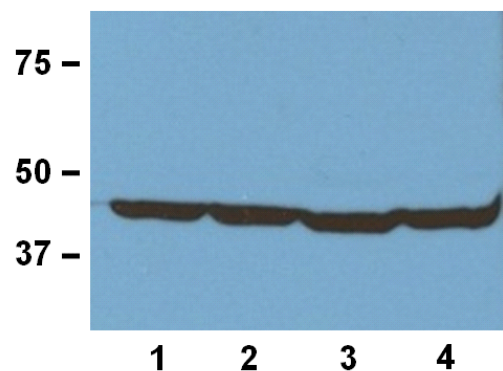
Dot, ELISA, IS, WB

WB (with ECL): 1:1000-3000 dilution (incubate for 1 hour at room temperature) IS: 1:500-2000 dilution

For best results with other assays (e.g.: Dot, ELISA, etc), please determine optimal working dilution by titration test

### Storage

Maintain refrigerated at 2-8°C for up to 6 months. For long term storage store at -20°C. Avoid repeated freeze-thaw cycles.



**Fig. 1:** 1:1000 (1µg/mL) Ab dilution used in WB of 20µg/lane tissue lysates from human (1), mouse (2), rat (3), and rabbit (4).