



transformed mouse 3T3 cell double minute 2, N-terminus (MDM2)  
polyclonal antibody

Cat. No.	Format	Size
PAB-10353	Purified	100 µg

**Animal ID:**

RB0691/RB0692

**Host:**

Rabbit

**Reactivity:**

Human, Mouse

**Buffers:**

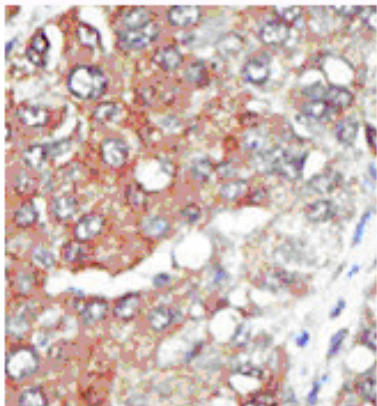
Purified rabbit polyclonal antibody supplied in PBS with 0.09% (W/V) sodium azide. This antibody is purified through a protein G column and eluted out with both high and low pH buffers and neutralized immediately after elution then followed by dialysis against PBS.

**Storage:**

Maintain refrigerated at 2-8°C for up to 6 months. For long term storage store at -20°C. Avoid repeated freeze-thaw cycles.

**Application:**

Tested by peptide-specific ELISA (1:1,000). WB (1:100 ~1:500), IHC (1:50 ~1:100)



Human Hepatocarcinoma

**Immunogen:**

KLH conjugated synthetic peptide selected from the N-terminal region of Human Mdm2.

**Accession number:**

[NM\\_002392](#)

**Description:**

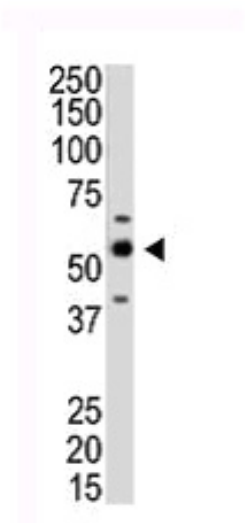
Human **Alternative Name(s):**  
[hdm2, p53 binding protein Mdm-2, Oncoprotein Mdm2](#)

**References:**

1. [Momand J, Zambetti GP, Olson DC, George D, Levine AJ:](#) The mdm-2 oncogene product forms a complex with the p53 protein and inhibits p53-mediated transactivation. *Cell* 69: 1237-1245 (1992).
2. [Oliner JD, Kinzler KW, Meltzer PS, George DL, Vogelstein B:](#) Amplification of a gene encoding a p53-associated protein in human sarcomas. *Nature* 358: 80-83 (1992).
3. [Xiao ZX, Chen J, Levine AJ, Modjtahedi N, Xing J, Sellers WR, Livingston D:](#) Interaction between the retinoblastoma protein and the oncoprotein MDM2. *Nature* 375: 694-698 (1995).

**For Research Use Only. Not for Diagnostic or Therapeutic Use.**

*Purchase does not include or carry any right to resell or transfer this product either as a stand-alone product or as a component of another product. Any use of this product other than the permitted use without the express written authorization of Allele, Inc. is strictly prohibited*



WB analysis of mouse kidney tissue lysate

---