



For Research Use Only. Not for Diagnostic or Therapeutic Use.

Purchase does not include or carry any right to resell or transfer this product either as a stand-alone product or as a component of another product. Any use of this product other than the permitted use without the express written authorization of Allele Biotech is strictly prohibited

Website: www.allelebiotech.com
Call: 1-800-991-RNAi/858-587-6645
(Pacific Time: 9:00AM~5:00PM)
Email: oligo@allelebiotech.com

Box 1 | Basic Info

Cat. No.	ABP-PAB-10357
Animal ID	RB0693-0694
Host	Rabbit
Reactivity	Human
Format	Purified
Accession number	NM_012116
Amount	100 µg

Alternative Name(s): CBL-C, CBL-SL, Cas-Br-M (murine) ecotropic retroviral transforming sequence c, RNF57, CBL-3, RNF57

References:

1. Ollendorff V, Mattei M, Fournier E, Adelaide J, Lopez M, Rosnet O, Birnbaum D: A third human CBL gene is on chromosome 19. *Int. J. Oncol.* 13: 1159-1161 (1998).
2. Keane MM, Ettenberg SA, Nau MM, Banerjee P, Cuello M, Penninger J, Lipkowitz S: cbl-3: a new mammalian cbl family protein. *Oncogene* 18: 3365-3375 (1999).
3. Kim M, Tezuka T, Suzuki Y, Sugano S, Hirai M, Yamamoto T: Molecular cloning and characterization of a novel cbl-family gene, cbl-c. *Gene* 239: 145-154 (1999).

CBLC, Casitas B-lineage lymphoma c, N-terminus polyclonal antibody

Casitas B-lineage lymphoma c (CBLC) is a member of the cbl family and seems to play a role in the regulation of EGFR-mediated signal transduction. CBLC has a phosphotyrosine binding domain and a zinc finger motif and is expressed in most fetal and adult tissues. Human and mouse CBLC share 67% amino acid identity. Its precise biological role is still unknown.

Buffers

Purified rabbit polyclonal antibody supplied in PBS with 0.09% (W/V) sodium azide. This antibody is purified through a protein G column and eluted out with both high and low pH buffers and neutralized immediately after elution then followed by dialysis against PBS.

Immunogen

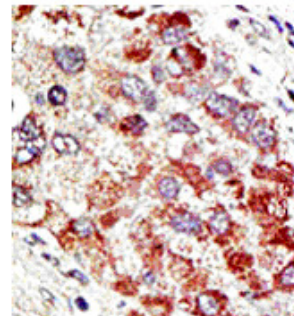
KLH conjugated synthetic peptide comprised of amino acids 10 - 26 [RQWEEARALGRAVRMLQ] of the human "casitas B-lineage lymphoma c, N-terminus (CBLC)" protein.

Application:

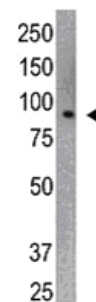
Tested by peptide-specific ELISA (1:1,000). WB (1:100 ~1:500), IHC (1:50 ~1:100)

Storage:

Maintain refrigerated at 2-8°C for up to 6 months. For long term storage store at -20°C. Avoid repeated freeze-thaw cycles.



Human Hepatocarcinoma



WB analysis of K562 cell lysate