



BAIAP3, BAI1-associated protein 3 Polyclonal Antibody

For Research Use Only. Not for Diagnostic or Therapeutic Use.

Purchase does not include or carry any right to resell or transfer this product either as a stand-alone product or as a component of another product. Any use of this product other than the permitted use without the express written authorization of Allele Biotech is strictly prohibited

Website: www.allelebiotech.com
Call: 1-800-991-RNAI/858-587-6645
(Pacific Time: 9:00AM~5:00PM)
Email: oligo@allelebiotech.com

Box 1 | Basic Info

Cat. No.	ABP-PAB-10428
Animal ID	RB2067/2068
Host	Rabbit
Reactivity	Human
Format	Purified
Accession number	NM_003933
Amount	100 µg

Alternative Name(s):

brain-specific angiogenesis inhibitor 1-associated protein 3, BAI1-associated protein 3, BAP3, KIAA0734

References:

1. Nagase T, Ishikawa K, Suyama M, Kikuno R, Miyajima N, Tanaka A, Kotani H, Nomura N, Ohara O: Prediction of the coding sequences of unidentified human genes. XI. The complete sequences of 100 new cDNA clones from brain which code for large proteins in vitro. DNA Res. 5(5): 277-286 (1998).
2. Shiratsuchi T, Oda K, Nishimori H, Suzuki M, Takahashi E, Tokino T, Nakamura Y: Cloning and characterization of BAP3 (BAI-associated protein 3), a C2 domain-containing protein that interacts with BAI1. Biochem. Biophys. Res. Commun. 251(1): 158-165 (1998).
3. Yu W, Andersson B, Worley KC, Muzny DM, Ding Y, Liu W, Ricafrente JY, Wentland MA, Lennon G, Gibbs RA: Large-scale concatenation cDNA sequencing. Genome Res. 7(4): 353-358 (1997).
4. Andersson B, Wentland MA, Ricafrente JY, Liu W, Gibbs RA: A double adaptor method for improved shotgun library construction. Anal Biochem. 236(1): 107-113 (1996).

BAI1-associated protein 3 (BAIAP3) is a seven-span transmembrane protein and a member of the secretin receptor family. It interacts with the cytoplasmic region of brain-specific angiogenesis inhibitor 1. This protein also contains two C2 domains, which are often found in proteins involved in signal transduction or membrane trafficking. Its expression pattern and similarity to other proteins suggest that it may be involved in synaptic functions.

Buffers

Purified rabbit polyclonal antibody supplied in PBS with 0.09% (W/V) sodium azide. This antibody is purified through a protein G column and eluted out with both high and low pH buffers and neutralized immediately after elution then followed by dialysis against PBS.

Immunogen

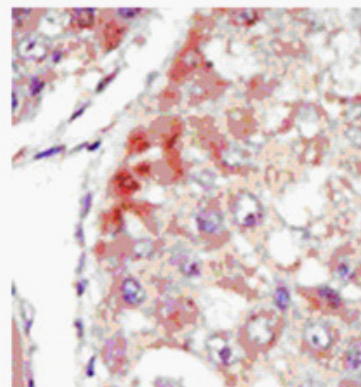
KLH conjugated synthetic peptide comprised of amino acids 1171 - 1187 [EFVKKLKELEKCMEADP] of the human BAI1-associated protein 3 (BAIAP3) protein.

Application

Tested by peptide-specific ELISA (1:1,000). IHC (1:50 ~1:100)

Storage

Maintain refrigerated at 2-8°C for up to 6 months. For long term storage, store at -20°C. Avoid repeated freeze-thaw cycles.



Human Hepatocarcinoma