



## BMPR1A, Bone morphogenetic protein receptor type IA polyclonal antibody

### For Research Use Only. Not for Diagnostic or Therapeutic Use.

Purchase does not include or carry any right to resell or transfer this product either as a stand-alone product or as a component of another product. Any use of this product other than the permitted use without the express written authorization of Allele Biotech is strictly prohibited

Website: [www.allelebiotech.com](http://www.allelebiotech.com)  
Call: 1-800-991-RNAi/858-587-6645  
(Pacific Time: 9:00AM~5:00PM)  
Email: [oligo@allelebiotech.com](mailto:oligo@allelebiotech.com)

### Box 1 | Basic Info

Cat. No.	ABP-PAB-10536
Animal ID	RB2217/2218
Host	Rabbit
Reactivity	Human
Format	Purified
Accession number	NM_004329
Amount	100 µg

#### Alternative Name(s):

bone morphogenetic protein receptor type IA, ALK3, ACVRLK3, activin A receptor type II-like kinase 3, BMPR1A

#### References:

1. Zhou XP, Woodford-Richens K, Lehtonen R, Kurose K, Aldred M, Hampel H, Launonen V, Virta S, Pilarski R, Salovaara R, Bodmer WF, Conrad BA, Dunlop M, Hodgson SV, Iwama T, Jarvinen H, Kellokumpu I, Kim JC, Leggett B, Markie D, Mecklin JP, Neale K, Phillips R, Piris J, Rozen P, Houlston RS, Aaltonen LA, Tomlinson IP, Eng C: Germline mutations in BMPR1A/ALK3 cause a subset of cases of juvenile polyposis syndrome and of Cowden and Bannayan-Riley-Ruvalcaba syndromes. *Am. J. Hum. Genet.* 69(4): 704-711 (2001).
2. Astrom AK, Jin D, Imamura T, Roijer E, Rosenzweig B, Miyazono K, ten Dijke P, Stenman G: Chromosomal localization of three human genes encoding bone morphogenetic protein receptors. *Mamm. Genome.* 10(3): 299-302 (1999).
3. ten Dijke P, Ichijo H, Franzen P, Schulz P, Saras J, Toyoshima H, Heldin CH, Miyazono K: Activin receptor-like kinases: a novel subclass of cell-surface receptors with predicted serine/threonine kinase activity. *Oncogene* 8(10): 2879-2887 (1993).

The bone morphogenetic protein receptors (BMPR) are a family of transmembrane serine/threonine kinases that include the type I receptors BMPR1A and BMPR1B and the type II receptor BMPR2. These receptors are also closely related to the activin receptors (ACVR), ACVR1 and ACVR2. The ligands of these receptors are members of the TGF-beta superfamily. TGF-beta proteins and activins transduce their signals through the formation of heteromeric complexes with two different types of serine/threonine kinase receptors: type I receptors of about 50-55 kD and type II receptors of about 70-80 kD. Type II receptors bind ligands in the absence of type I receptors, but they require their respective type I receptors for signaling, whereas type I receptors require their respective type II receptors for ligand binding.

#### Buffers

Purified rabbit polyclonal antibody supplied in PBS with 0.09% (W/V) sodium azide. This antibody is purified through a protein G column and eluted out with both high and low pH buffers and neutralized immediately after elution then followed by dialysis against PBS.

#### Immunogen

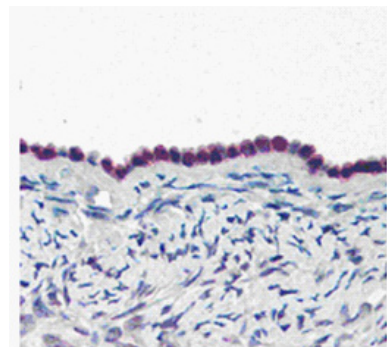
KLH conjugated synthetic peptide comprised of amino acids 36 - 51 [KSDSDQKKSENGVTLA] of the human bone morphogenetic protein receptor type IA (BMPR1A) protein.

#### Application

Tested by peptide-specific ELISA (1:1,000). IHC (1:50 ~1:100)

#### Storage

Maintain refrigerated at 2-8°C for up to 6 months. For long term storage store at -20°C. Avoid repeated freeze-thaw cycles.



Ovary, Surface Epithelium