



**For Research Use Only. Not for Diagnostic or Therapeutic Use.**

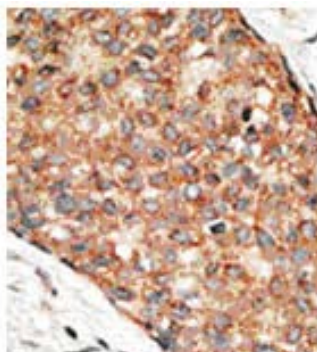
Purchase does not include or carry any right to resell or transfer this product either as a stand-alone product or as a component of another product. Any use of this product other than the permitted use without the express written authorization of Allele Biotech is strictly prohibited

Website: [www.allelebiotech.com](http://www.allelebiotech.com)  
Call: 1-800-991-RNAi/858-587-6645  
(Pacific Time: 9:00AM~5:00PM)  
Email: [oligo@allelebiotech.com](mailto:oligo@allelebiotech.com)

**Box 1 | Basic Info**

Cat. No.	ABP-PAB-10781
Animal ID	RB1841-1842
Host	Rabbit
Reactivity	Human
Format	Purified
Accession number	NM_052953
Amount	100µg

**Alternative Name(s):** Leucine-rich repeat protein LRP15, UNQ195/PRO221, LRP15



Human Breast Carcinoma

## LRP15, Low-density lipoprotein receptor-related protein 15 polyclonal antibody

Low-density lipoprotein receptor-related protein 15 (LRP15) is a member of the low density lipoprotein receptor family (LDLR) which consists of cell surface proteins involved in receptor-mediated endocytosis of specific ligands. LDLR proteins are comprised of the same basic structural motifs: (i) an extracellular domain which contains LDLR binding repeats, and EGF repeats with associated spacer domains containing the YWTD motif; (ii) a single transmembrane-spanning domain; and (iii) a C-terminal cytoplasmic domain which generally contains at least one copy of the NPXY motif. The biological function of LRP15 is still unclear.

### Buffers

Purified rabbit polyclonal antibody supplied in PBS with 0.09% (W/V) sodium azide. This antibody is purified through a protein G column and eluted out with both high and low pH buffers and neutralized immediately after elution then followed by dialysis against PBS.

### Immunogen

KLH conjugated synthetic peptide comprised of amino acids 245 - 259 [RQKKADEPDDISTVV] of the human low-density lipoprotein receptor-related protein 15 (LRP15) protein.

### Application:

Tested by peptide-specific ELISA (1:1,000). WB (1:100 ~1:500), IHC (1:50 ~1:100)

### Storage

Maintain refrigerated at 2-8°C for up to 6 months. For long term storage store at -20°C. Avoid repeated freeze-thaw cycles.

### References:

1. Tamai K, Semenov M, Kato Y, Spokony R, Liu C, Katsuyama Y, Hess F, Saint-Jeannet JP, He X: LDL-receptor-related proteins in Wnt signal transduction. Nature 407(6803): 530-535 (2000).



WB analysis of A549 cell lysate