



For Research Use Only. Not for Diagnostic or Therapeutic Use.

Purchase does not include or carry any right to resell or transfer this product either as a stand-alone product or as a component of another product. Any use of this product other than the permitted use without the express written authorization of Allele Biotech is strictly prohibited

Website: www.allelebiotech.com
Call: 1-800-991-RNAi/858-587-6645
(Pacific Time: 9:00AM-5:00PM)
Email: oligo@allelebiotech.com

Box 1 | Basic Info

Cat. No.	ABP-PAB-11100
Animal ID	RB2111/2112
Host	Rabbit
Reactivity	Human
Format	Purified
Accession number	NM_012241
Amount	100 µg

Alternative Name(s): sirtuin (silent mating type information regulation 2 homolog) 5 (*S. cerevisiae*), SIR2L5, sir2-like 5, sirtuin type 5, SIRT5

References:

1. Frye RA: Phylogenetic classification of prokaryotic and eukaryotic Sir2-like proteins. *Biochem. Biophys. Res. Commun.* 273(2): 793-798 (2000).
1. Frye RA: Characterization of five human cDNAs with homology to the yeast SIR2 gene: Sir2-like proteins (sirtuins) metabolize NAD and may have protein ADP-ribosyltransferase activity. *Biochem. Biophys. Res. Commun.* 260(1): 273-279 (1999).

SIRT5, Sirtuin 5

Polyclonal Antibody

Sirtuin 5 (SIRT5) is a member of the sirtuin (silent mating type information regulation) family of proteins, homologs to the yeast Sir2 protein. Sirtuins are being grouped into four classes based on a sirtuin core domain and SIRT5 is a member of class III. The functions of mammalian sirtuins have not yet been determined, however, yeast sirtuin proteins are known to regulate epigenetic gene silencing and suppress recombination of rDNA. Human sirtuins may function as intracellular regulatory proteins with mono-ADP-ribosyltransferase activity.

Buffers

Purified rabbit polyclonal antibody supplied in PBS with 0.09% (W/V) sodium azide. This antibody is purified through a protein G column and eluted out with both high and low pH buffers and neutralized immediately after elution then followed by dialysis against PBS.

Immunogen

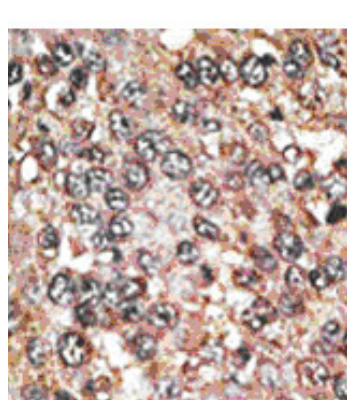
KLH conjugated synthetic peptide comprised of amino acids 278 - 293 [TTPATNRFRHFHQGPC] of the human sirtuin 5 (SIRT5) protein.

Application

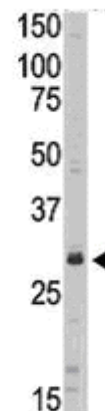
Tested by peptide-specific ELISA (1:1,000). WB (1:100 ~1:500), IHC (1:50 ~1:100)

Storage

Maintain refrigerated at 2-8°C for up to 6 months. For long term storage store at -20°C. Avoid repeated freeze-thaw cycles.



Human Hepatocarcinoma



WB analysis of Jurkat cell lysate