



## SHPRH, SHPRH Polyclonal Antibody

### For Research Use Only. Not for Diagnostic or Therapeutic Use.

Purchase does not include or carry any right to resell or transfer this product either as a stand-alone product or as a component of another product. Any use of this product other than the permitted use without the express written authorization of Allele Biotech is strictly prohibited

Website: [www.allelebiotech.com](http://www.allelebiotech.com)  
Call: 1-800-991-RNAi/858-587-6645  
(Pacific Time: 9:00AM-5:00PM)  
Email: [oligo@allelebiotech.com](mailto:oligo@allelebiotech.com)

### Box 1 | Basic Info

Cat. No.	ABP-PAB-24315
Animal ID	N/A
Host	Rabbit
Reactivity	Human, Mouse, Rat
Format	Affinity Purified
Accession number	N/A
Amount	0.1 mg

#### Alternative Name(s):

N/A

#### References:

1. Sood R, Makalowska I, Galdzicki M, Hu P, Eddings E, Robbins CM, Mpses T, Namkoong J, Chen S, and Trent JM: Cloning and characterization of a novel gene, SHPRH, encoding a conserved putative protein with SNF2/helicase and PHD-finger domains from the 6q24 region. *Genomics*. Aug;82(2): 153-61 (2003).

A novel gene containing SNF2, PHD-finger, RING-finger, helicase, and linker histone domains termed SHPRH, is a possible candidate for a tumor suppressor gene. These domains are characteristic of several DNA repair proteins, transcription factors, and helicases. Mapping of this gene to 6q24, a region reported to contain a tumor suppressor locus suggests a role in tumor suppression.

#### Buffers

0.1 mg in 0.1 ml (1 mg/ml) in PBS containing 0.02% sodium azide.

#### Immunogen

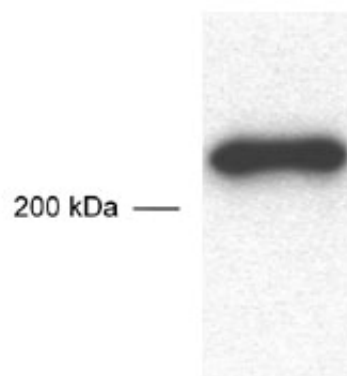
Reacts with residues 515-535 (DKTKKQAVG-SPRKIEKELRKS) of the mouse SHPRH protein. 95% sequence identity to rat. 90% sequence identity to human

#### Application

WB: 1:1,000

#### Storage

For long term storage -20°C is recommended. Stable at -20°C for at least 1 year.



Western blot of SHPRH antibody (diluted 1:500) performed from 30 µg of murine brain lysate.