



Humanin, Humanin Polyclonal Antibody

For Research Use Only. Not for Diagnostic or Therapeutic Use.

Purchase does not include or carry any right to resell or transfer this product either as a stand-alone product or as a component of another product. Any use of this product other than the permitted use without the express written authorization of Allele Biotech is strictly prohibited

Website: www.allelebiotech.com
Call: 1-800-991-RNAi/858-587-6645
(Pacific Time: 9:00AM-5:00PM)
Email: oligo@allelebiotech.com

Box 1 | Basic Info

Cat. No.	ABP-PAB-24358
Animal ID	N/A
Host	Rabbit
Reactivity	Human
Format	Affinity Purified
Accession number	N/A
Amount	0.1 mg

Alternative Name(s):

N/A

References:

1. Hashimoto Y, Niikura T, Tajima H, Yasukawa T, Sudo H, Ito Y, Kita Y, Kawasumi M, Kouyama K, Doyu M, Sobue G, Koide T, Tsuji S, Lang J, Kurokawa K, and Nishimoto I: A rescue factor abolishing neuronal cell death by a wide spectrum of familial Alzheimer's disease genes and Abeta. Proc Natl Acad Sci U S A. May 22;98(11): 6336-41 (2001).

Gene, Humanin, encodes a short polypeptide and abolishes death of neuronal cells caused by multiple different types of familial Alzheimer's disease genes and by Abeta amyloid, without effect on death by Q79 or superoxide dismutase-1 mutants. This polypeptide serves as a molecular clue for the development of new therapeutics for Alzheimer's disease targeting neuroprotection.

Buffers

0.1 mg in 0.1 ml (1 mg/ml) in PBS containing 0.02% sodium azide.

Immunogen

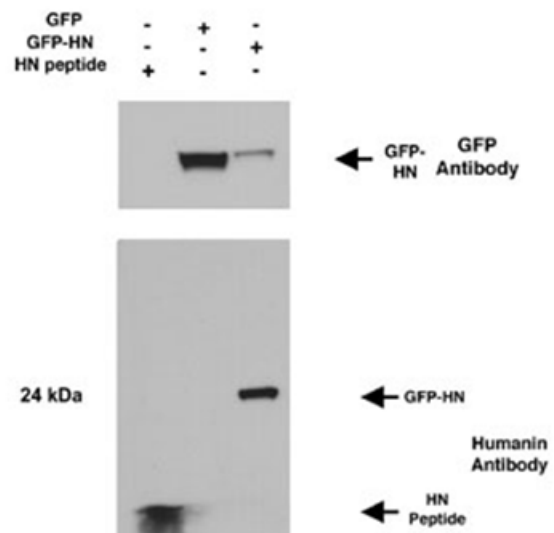
Reacts with residues 9-24 (LLLLTSEIDL PVKRRRA) of the Humanin protein.

Application

WB: 1:1,000

Storage

Maintain refrigerated at 2-8°C for up to 6 months. For long term storage, store at -20°C. Avoid repeated freeze-thaw cycles.



Western blot performed from 100 ng of synthetic Humanin peptide and from 50 ug of total lysates of 293 T cells transfected with plasmids encoding GFP-Humanin. Antibody used at 1:1,000 dilution.