



## PDE11A, Phosphodiesterase 11A Polyclonal Antibody

### For Research Use Only. Not for Diagnostic or Therapeutic Use.

Purchase does not include or carry any right to resell or transfer this product either as a stand-alone product or as a component of another product. Any use of this product other than the permitted use without the express written authorization of Allele Biotech is strictly prohibited

Website: [www.allelebiotech.com](http://www.allelebiotech.com)  
Call: 1-800-991-RNAi/858-587-6645  
(Pacific Time: 9:00AM~5:00PM)  
Email: [oligo@allelebiotech.com](mailto:oligo@allelebiotech.com)

### Box 1 | Basic Info

Cat. No.	ABP-PAB-31035
Animal ID	N/A
Host	Rabbit
Reactivity	Human
Format	Purified
Accession number	NM_016953
Amount	50 µg

**Alternative Name(s):** cyclic nucleotide phosphodiesterase 11A; pde11; pde11a

### References:

1. N/A

Phosphodiesterase 11A is a cAMP/cGMP dual-specific phosphodiesterase. PDE11A activity is inhibited by IBMX, as well as zaprinast and dipyridamole. At least four isoforms have been identified which carry distinct GAF sequences in the N-terminal regions. PDE11A2 contains an additional 86 amino acids at the N-terminus. PDE11A3 contains an additional 108 N-terminal amino acids compared to PDE11A2. PDE11A4 is the longest isoform.

### Buffers

Purified rabbit polyclonal antibody supplied in PBS, pH 7.7 with 0.01% (W/V) sodium azide. This antibody is purified through a peptide immunoaffinity column and neutralized immediately after elution then followed by dialysis against PBS.

### Immunogen

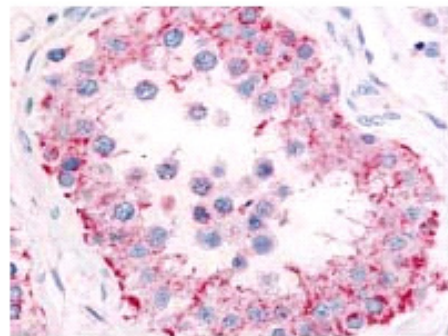
KLH conjugated synthetic peptide of internal domain of human Phosphodiesterase 11A.

### Application

N/A

### Storage

Maintain refrigerated at 2-8°C for up to 6 months. For long term storage store at -20°C. Avoid repeated freeze-thaw cycles.



Testis