



## PDE3A, Phosphodiesterase 3A Polyclonal Antibody

### For Research Use Only. Not for Diagnostic or Therapeutic Use.

Purchase does not include or carry any right to resell or transfer this product either as a stand-alone product or as a component of another product. Any use of this product other than the permitted use without the express written authorization of Allele Biotech is strictly prohibited

Website: [www.allelebiotech.com](http://www.allelebiotech.com)  
Call: 1-800-991-RNAi/858-587-6645  
(Pacific Time: 9:00AM-5:00PM)  
Email: [oligo@allelebiotech.com](mailto:oligo@allelebiotech.com)

### Box 1 | Basic Info

Cat. No.	ABP-PAB-31038
Animal ID	N/A
Host	Rabbit
Reactivity	Human
Format	Purified
Accession number	NM_000921
Amount	50 µg

**Alternative Name(s):** cAMP Phosphodiesterase, Myocardial cGMP-Inhibited; CGI-PDE A; cGIP2

### References:

1. N/A

Phosphodiesterase 3A is a cGMP inhibited, cAMP/cGMP dual-specific phosphodiesterase. PDE3A has been implicated in male erectile dysfunction, mammalian oocyte maturation, platelet function, vascular smooth muscle function, and salivary gland tumors. Three alternatively spliced transcripts have been reported.

### Buffers

Purified rabbit polyclonal antibody supplied in PBS, pH 7.7 with 0.01% (W/V) sodium azide. This antibody is purified through a peptide immunoaffinity column and neutralized immediately after elution then followed by dialysis against PBS.

### Immunogen

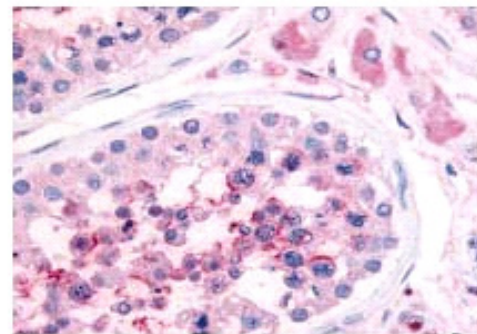
KLH conjugated synthetic peptide of N-terminal domain of human Phosphodiesterase 3A (PDE3A).

### Application

N/A

### Storage

Maintain refrigerated at 2-8°C for up to 6 months. For long term storage store at -20°C. Avoid repeated freeze-thaw cycles.



Testis