



PDE3A, Phosphodiesterase 3A Polyclonal Antibody

For Research Use Only. Not for Diagnostic or Therapeutic Use.

Purchase does not include or carry any right to resell or transfer this product either as a stand-alone product or as a component of another product. Any use of this product other than the permitted use without the express written authorization of Allele Biotech is strictly prohibited

Website: www.allelebiotech.com
Call: 1-800-991-RNAi/858-587-6645
(Pacific Time: 9:00AM-5:00PM)
Email: oligo@allelebiotech.com

Box 1 | Basic Info

Cat. No.	ABP-PAB-31039
Animal ID	N/A
Host	Rabbit
Reactivity	Human
Format	Purified
Accession number	NM_000921
Amount	50 µg

Alternative Name(s): cAMP Phosphodiesterase, Myocardial cGMP-Inhibited; CGI-PDE A; cGIP2

References:

1. N/A

Phosphodiesterase 3A is a cGMP inhibited, cAMP/cGMP dual-specific phosphodiesterase. PDE3A has been implicated in male erectile dysfunction, mammalian oocyte maturation, platelet function, vascular smooth muscle function, and salivary gland tumors. Three alternatively spliced transcripts have been reported.

Buffers

Purified rabbit polyclonal antibody supplied in PBS, pH 7.7 with 0.01% (W/V) sodium azide. This antibody is purified through a peptide immunoaffinity column and neutralized immediately after elution then followed by dialysis against PBS.

Immunogen

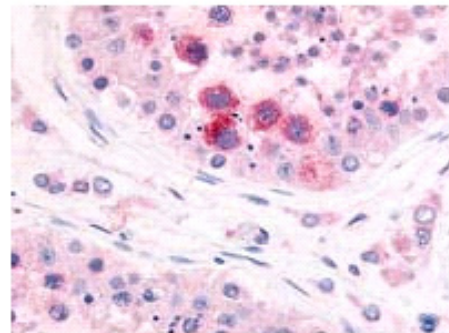
KLH conjugated synthetic peptide of N-terminal domain of human Phosphodiesterase 3A (PDE3A).

Application

N/A

Storage

Maintain refrigerated at 2-8°C for up to 6 months. For long term storage store at -20°C. Avoid repeated freeze-thaw cycles.



Testis