



## Noggin, polyclonal antibody

### For Research Use Only. Not for Diagnostic or Therapeutic Use.

Purchase does not include or carry any right to resell or transfer this product either as a stand-alone product or as a component of another product. Any use of this product other than the permitted use without the express written authorization of Allele Biotech is strictly prohibited

Website: [www.allelebiotech.com](http://www.allelebiotech.com)  
Call: 1-800-991-RNAi/858-587-6645  
(Pacific Time: 9:00AM-5:00PM)  
Email: [oligo@allelebiotech.com](mailto:oligo@allelebiotech.com)

### Box 1 | Basic Info

Cat. No.	ABP-PAB-40875
Animal ID	N/A
Host	Rabbit
Reactivity	Human, Mouse, Rat
Format	Purified
Accession number	NP_005441
Amount	100 µg

Alternative Name(s): Noggin, Mouse Homolog of; Noggin precursor, NOG

Noggin is involved in numerous developmental processes, such as neural tube fusion and joint formation. The morphogenesis of organs is initiated by a down growth from a layer of epithelial stem cells. This process is achieved through the receipt of signals from 1) a WNT protein (WNT3A) to stabilize beta-catenin; and 2) Noggin, which is a bone morphogenetic protein inhibitor. Noggin mutations in unrelated families with proximal symphalangism (SYM1) and multiple synostoses syndrome (SYNS1) have been identified, which have multiple joint fusion as their principal defect.

### Buffers

Purified rabbit polyclonal antibody supplied in PBS, pH7.7 with 0.02% (W/V) sodium azide. This antibody is purified through a peptide immunoaffinity column and neutralized immediately after elution then followed by dialysis against PBS.

### Immunogen

KLH conjugated synthetic peptide comprised of internal amino acids of the human Nanog protein.

### Application:

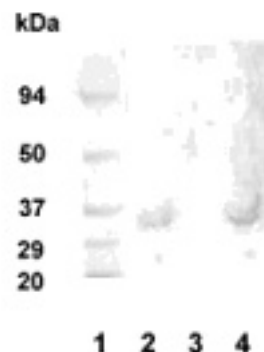
N/A

### Storage:

Maintain refrigerated at 2-8°C for up to 6 months. For long term storage store at -20°C. Avoid repeated freeze-thaw cycles.

### References:

N/A



WB analysis of Human Hippocampus tissue lysate ( lane 2 and 4 )